

Introducing D.e-Express

Ver.3.5

20XX/XX/XX

TOYOTA SYSTEMS CORPORATION

1. Current Issues	... P.3
2. Introducing D.e-Express	... P.4
3. Function	... P.5
4. Screen Image	... P.6
5. D.e-Express Example usage	... P.10
6. Provided Price	... P.14
7. Appendix1: Functional list	... P.17
8. Appendix2: Use environment	... P.18
9. Appendix3: Service time and Data Guarantee	... P.19
10. Appendix4: Notice for using D.e-Express	... P.20

Do you have a solution for the following circumstances?

■ Troublesome Circumstances

- Difficult to maintain multiple EDI services for each business connection.
- Range delay occurs when transferring data overseas.
- Need to send large capacity data, but dividing data takes time.



■ The Ideal State

- **No need to use separate systems** for multiple manufacturers and industries !
- **Stress free operation** even when transferring data overseas !
- **Send 100GB data with one transaction.**

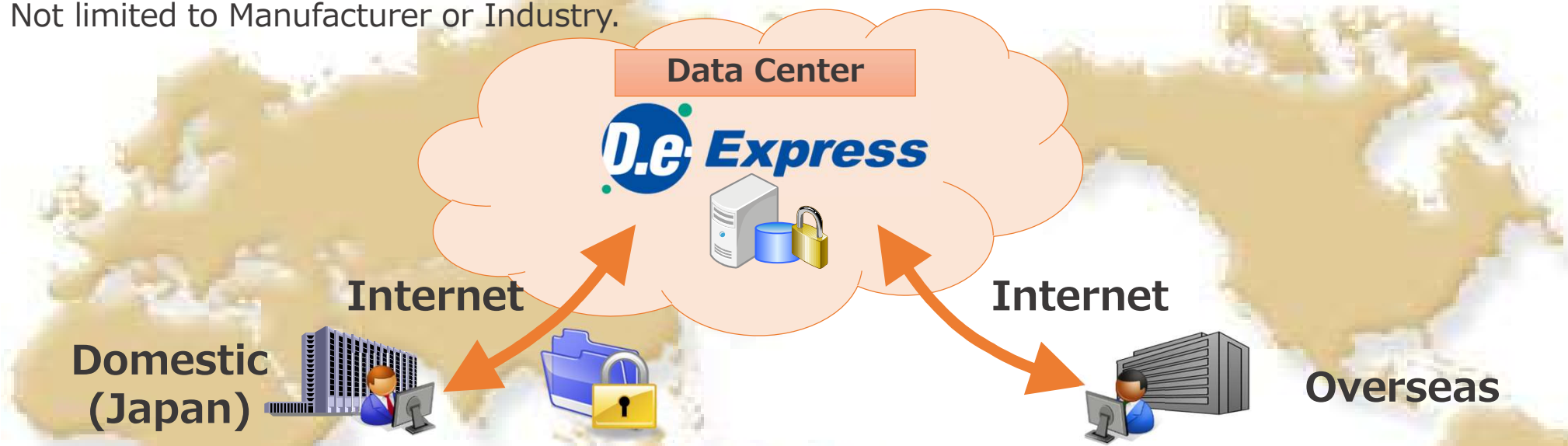
**TOYOTA SYSTEMS provides the solution with
our data transfer service “D.e-Express”**

2.Introducing D.e-Express

Cloud (SaaS) type data transfer (Web EDI) service

Global Data Transfer Service provided with “Low Cost” and “Large Capacity”

Not limited to Manufacturer or Industry.



Specification

Can be used with Internet connection all around the world with security measures in place

- High speed communication technology applied.
- Communication encryption and data encryption technology applied.

Send large capacity data without dividing the data.

- Able to send large capacity data over 2GB with one transaction

Can easily send data to users that are not registered to the service.

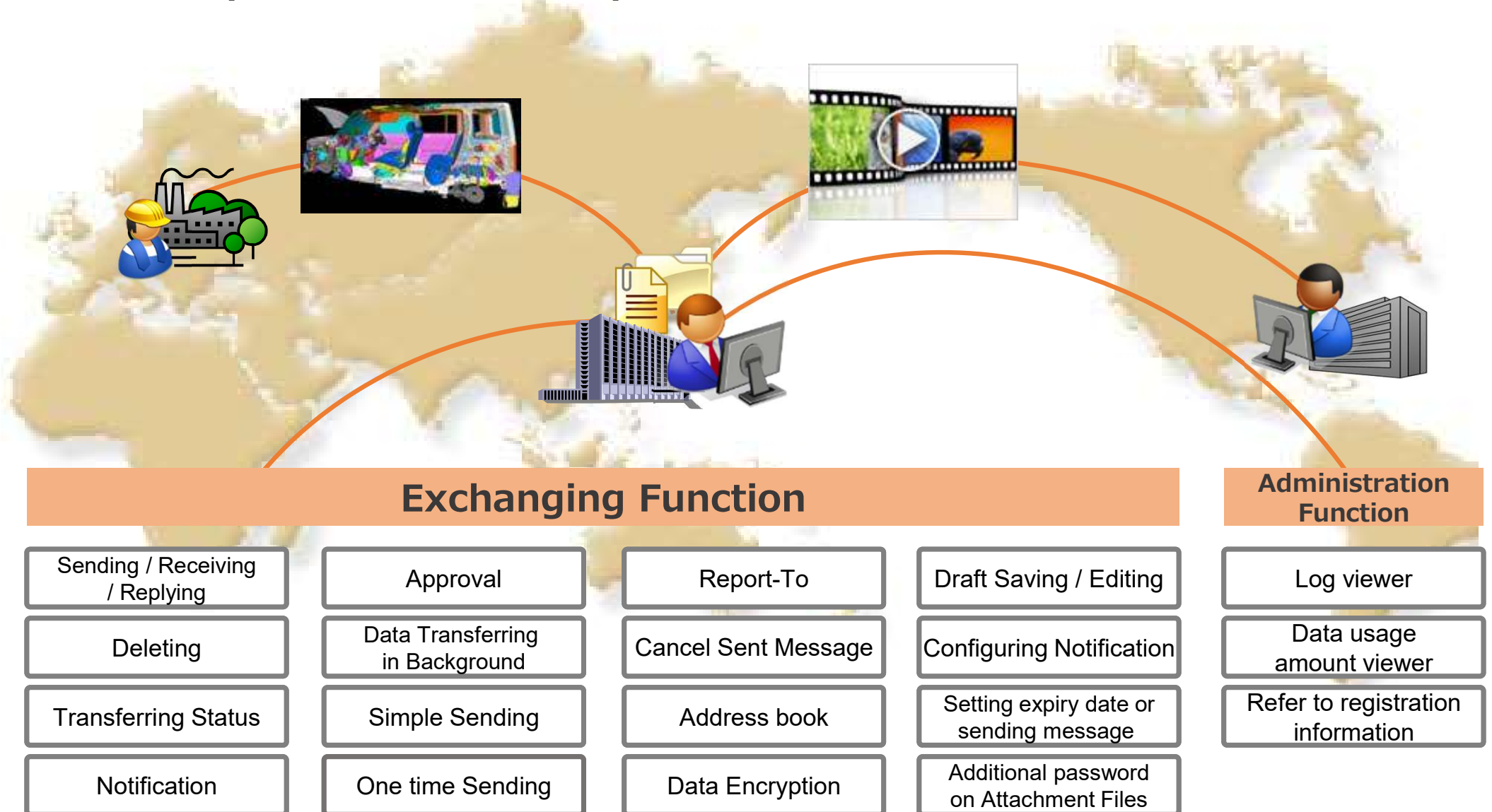
- Able to send data to users that are not registered. (Has limitations in function)

Reasonable price setting

- Charged by registered ID numbers. (* To use over 100GB/month required a paid option.)
- Service fee is charged to the company which sends data (Owner of the service)

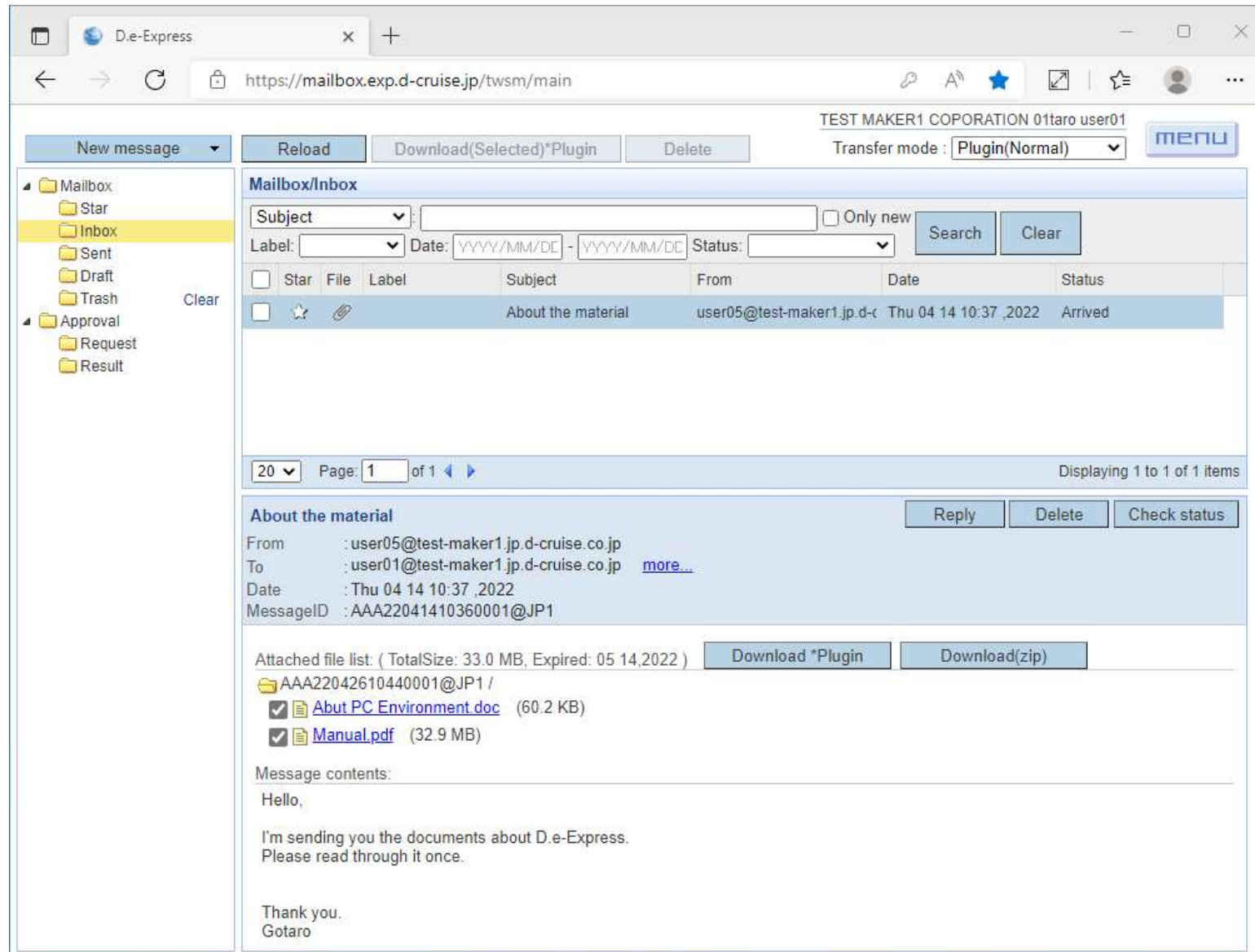
3.Function

With multiple function, D.e-Express can be used in various seems !



4.Screen Image 1/4 (Main Screen)

Intuitive interface similar to Web e-mail !



Screen will switch
according to the task at hand.
Sent / Inbox / Draft / Trash
/ Approval etc.

Search for message
using various search criteria.
Date / read or unread
/ task label / status etc.

Confirm the receiving
status of the sent data.
Arrived / Downloaded

Message is deleted
automatically in 365 days.
*Draft messages are never
deleted.

Sender can send
data with a message

4.Screen Image 2/4 (Send Screen 1/2)

The sending operation is similar to e-mail, making it easy to expand multiple to users

The screenshot shows the 'D.e-Express' web application interface. The browser address bar displays 'https://mailbox.exp.d-cruise.jp/twsm/main'. The page title is 'TEST MAKER1 COPORATION 05taro user05'. The 'Transfer mode' is set to 'Plugin(Normal)'. The main form is titled 'Data Exchange With External (ContractNo:2015110500) - Standard'. It includes fields for 'From' (user05@test-maker1.jp.d-cruise.co.jp), 'To' (user01@test-maker1.jp.d-cruise.co.jp, user02@test-maker1.jp.d-cruise.co.jp), 'ReportTo', 'Subject' (About the material), and 'Label'. The 'Attached' section shows a list of files: 'folder0001 (4.88 KB / 50files) C:\tmp\folder0001', 'About PC environments.doc (60.2 KB) C:\tmp\About PC environments.doc', and 'manual.pdf (32.9 MB) C:\tmp>manual.pdf'. There are 'Add', 'Delete', and 'Reload' buttons for attachments. The 'Keeping days' is set to 'default', and the 'Download password' is a text input field. The 'Message' field contains the text: 'Hello, I'm sending you the document about the D.e-Express. Please read through it once. Thank you Gotaro'. The 'Approver' is set to '01taro user01', and the 'Comment to approver' is 'This is our customer requested to have. Please approve it.'. At the bottom, there are buttons for 'Send', 'Save', 'Save as new', and 'Cancel'. A left sidebar shows a folder structure: Mailbox, Star, Inbox, Sent, Draft, Trash, Approval, Request, and Result. A 'New message' button is at the top left, and a 'Clear' button is next to the 'Trash' folder.

[Report To] is like mail CC.
It will be displayed on CC of
"Sending completion" and
"Downloading notification" email

Plug-in mode

Select send data.
(More many files/folders
can be selected.)
*Plug-in installation required

Keeping days

Select from 1-15 days.

Download password

Sets the password on
downloading attachment files

Request approval to approver

send request mail to approver

4.Screen Image 3/4 (Send Screen 2/2)

The sending operation is similar to e-mail, making it easy to expand multiple to users.

The screenshot shows a web browser window with the URL <https://mailbox.exp.d-cruise.jp/twsm/main>. The main interface is for composing an email. The subject is "Data Exchange With External (ContractNo:2015110500) - Standard". The "From" field is filled with "user05@test-maker1.jp.d-cruise.co.jp". A "Set To" dialog box is open, showing a list of addresses from an addressbook. The addressbook contains two entries: "01taro user01" with email "user01@test-maker1.jp.d-c" and "05taro user05" with email "user05@test-maker1.jp.d-c". The dialog also has a "Destination tree" on the left and buttons for "Set To" and "Cancel".

Name	Address	Company	Division
<input type="checkbox"/> 01taro user01	user01@test-maker1.jp.d-c	TEST MAKER1 COF	Administration Div.
<input type="checkbox"/> 05taro user05	user05@test-maker1.jp.d-c	TEST MAKER1 COF	Engineering Div.

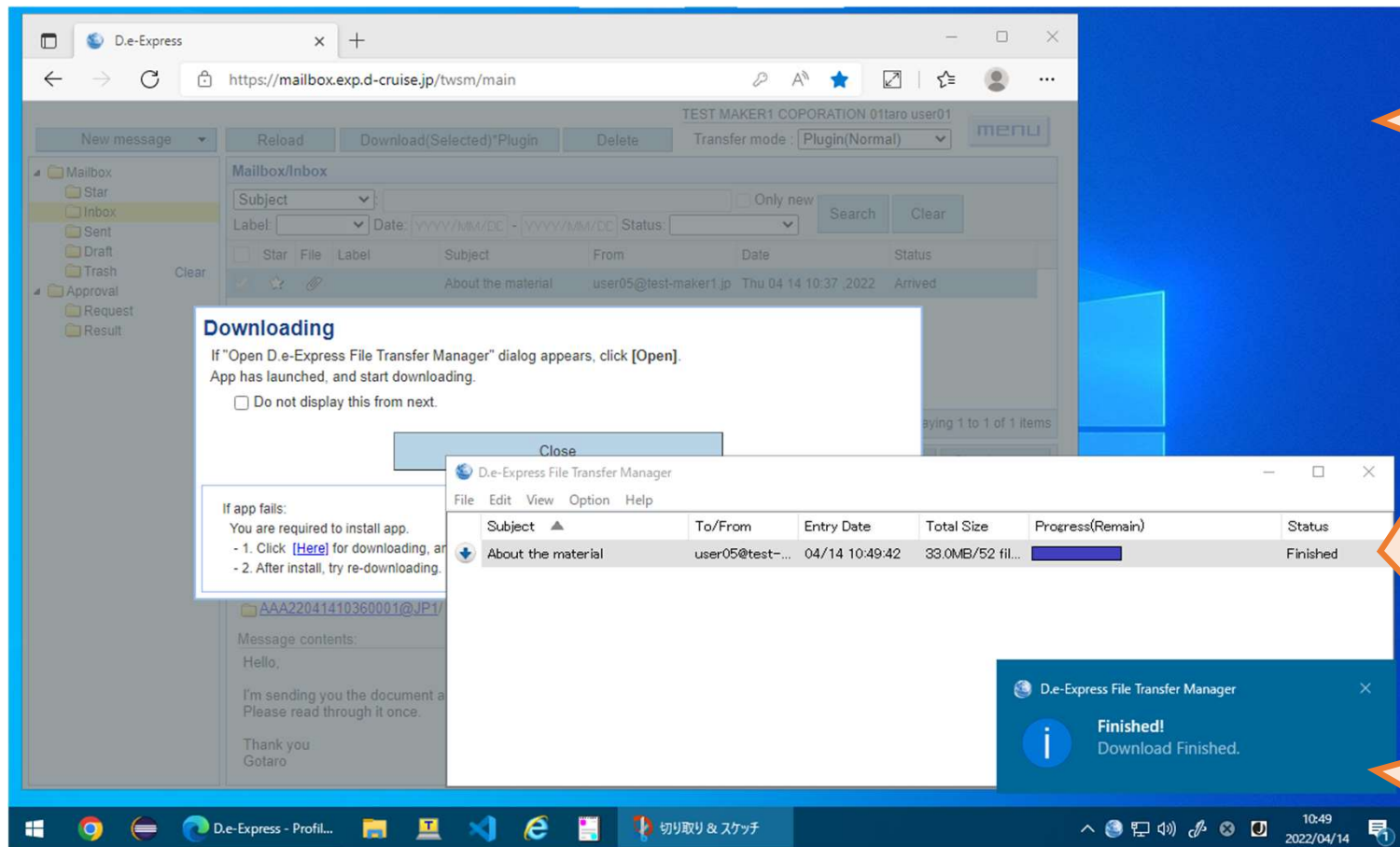
Search for address
using search condition.
ALL / Name / Address
/ Company / Division

**Addressbook resides
in this address picker
window.**

1. Addressbook
You can register any
addresses in Addressbook.
2. Organization tree
You can select address
candidate by Company >
Organization > User
(It have to be pre-registered.)

4.Screen Image 4/4 (File Transfer Manager Screen)

- **Able to perform other operations** when sending and receiving data
- **Automatically retry** when communication error occurs



Plug-in mode

Normal mode / High-Speed mode / Durability mode

Status

Upload/Download on File Transfer Manager

Able to perform other operations

when sending and receiving data

Automatically retry

when communication error occurs.
(resumes from an error occurrence time point in time of restoration.)

"Finished!"

When transfer is finished, a popup will be displayed on task tray icon.

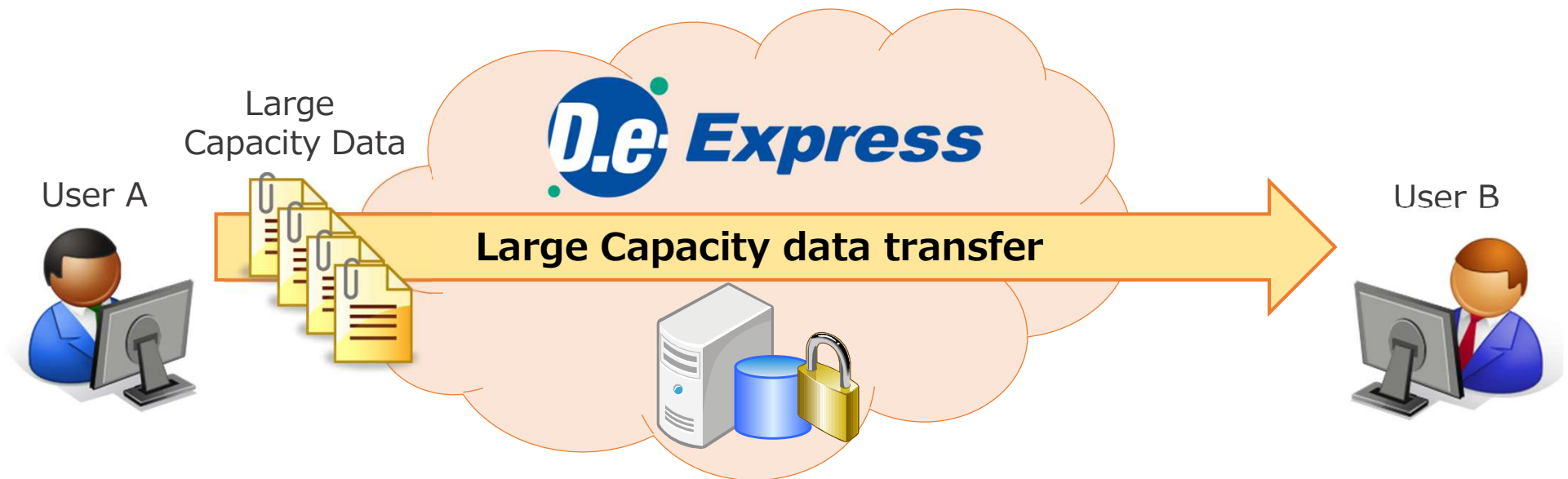
5.Example usage 1/4

Easy to send large capacity CAD data !

■ Issues

- Need to reduce cost in making media (DVD etc.) and sending by postal service , large capacity CAD data which is over 100MB.

With D.e-Express



5.Example usage 2/4

Secure to send Confidential data !

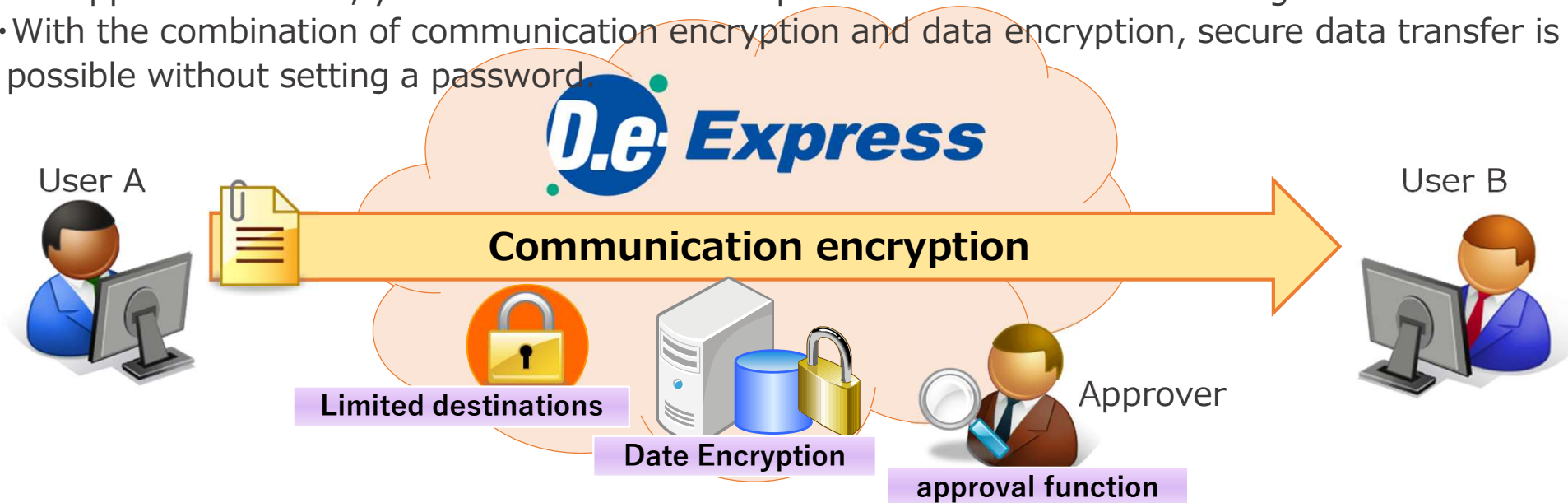
■ Issues

- Sending reports from each sales branch to head office by e-mail?
There are risks of information leakage, because by using normal e-mail there is a possibility that the sender will mistake addresses or attached data.
- To keep security levels high there is a need to put a password on each data.

With D.e-Express

■ After: Reduce risks of information leakage when transferring confidential data!

- Only the addresses that are registered before hand are displayed as limited destinations and with the approval function, you can double check to prevent mistakes when sending data.
- With the combination of communication encryption and data encryption, secure data transfer is possible without setting a password.



5.Example usage 3/4

With anyone ! Right away !

■ Issues

- Need to send parts specification data right away to a partner which hasn't applied to a data transfer service, and had to wait for a while till they applied and started the transfer service.

With D.e-Express

■ After: Able to transfer data at the right time !

- Able to transfer data at the right time, because even when your partner is not registered to the service you can send them data right away.
- For partners that you don't send data often, there is no need for them to register to the service to receive data.



5.Example usage 4/4 Speedy with overseas !

*** Option**

■ Issues

- Sending merchandise catalogs or analysis data to overseas branches (Europe) with file servers takes too much time.
- Sometimes the communication cuts off in the middle of transmission, so there was a need to retry transferring data.

With D.e-Express

■ After: Able to shorten lead time of transferring data to global branches!

- With "High Speed Function" you are able to transfer data with speed.
 - * Plug-in installation required.

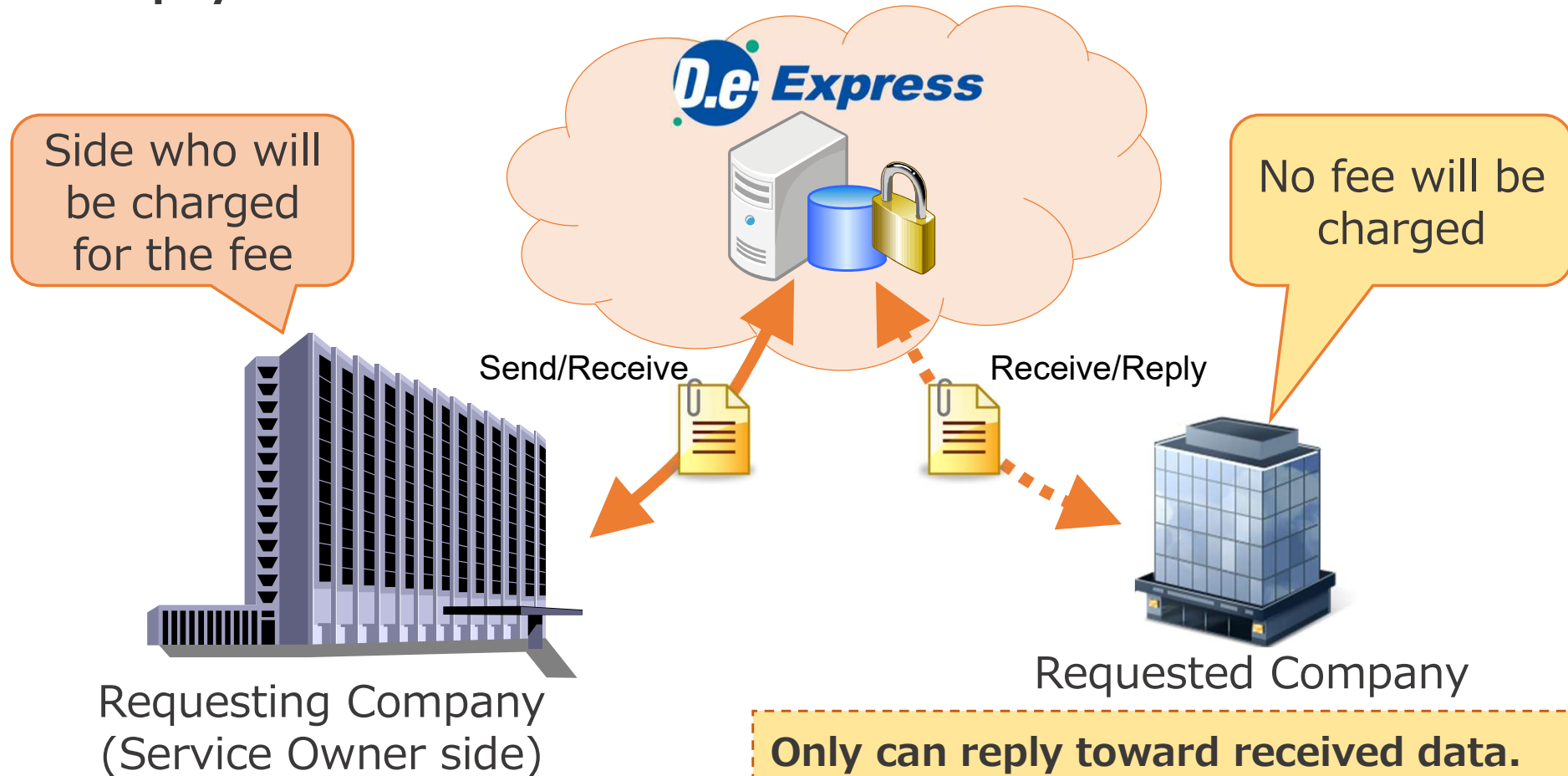


6.Provided Price 1/3 Price List

	Functions	Charge	
		Japan	Other country
File exchanging	Send or its approval	JPY4,000 a month (for 5 IDs) * JPY800 a month for an additional ID (JPY600 a month at more than 2,000ID) * Minimum term of contract: 12 months	Contact Sales
	Receive, reply, approval of reply	Free	
Administration	Log viewer, usage amount viewer		
Options	High-Speed transfer	JPY400/ID a month (+ service fee above)	Contact Sales
	Additional data usage amount	JPY20,000/1 option a month (+ service fee above) *Required to use over 100GB/month. *Increases 100 GB for 1 month per 1 option.	
	IP address control	Contact Sales	
	Application interface (API)		
	Monitoring usage / alert		
	Others		

6.Provided Price 2/3 Policy of which side pays the fee

Requesting Company (Service Owner side) will be the contract company, and will pay the fee for the service.



Only can reply toward received data.

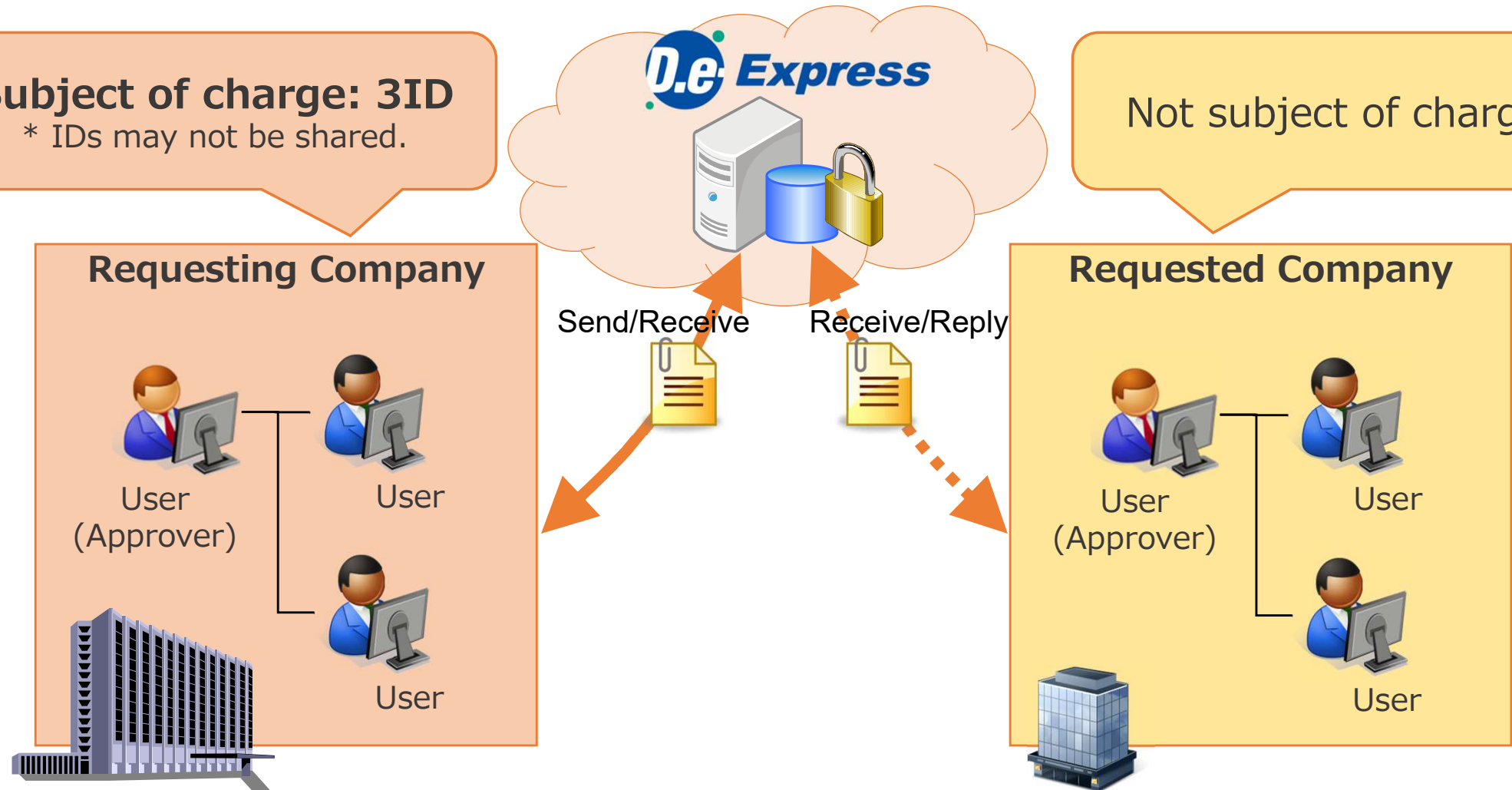
* If there is a need to send data to companies other than the Requesting company, it is necessary to contract as a Requesting company (Service Owner) which will pay the fee to transfer data.

6.Provided Price 3/3 IDs that are subject of charge

The registered number of IDs that are subject of charge will be charged to the Requesting Company (Service Owner side) weather or not they are used.

Subject of charge: 3ID

* IDs may not be shared.



Appendix1.Function List

Sections	Functions	Description
Exchanging	Sending / Receiving / Replying	Sending / Replying data to (or Receiving data from) individual user or group.
	Deleting	Deleting message manually and automatically.
	Transferring Status	Check sent/received data status.(Arrived/Downloaded etc)
	Notification	Noticed arriving message by e-mail and indicating number of new coming message on D.e-Express screen.
	Approval	Send message after the approval.
	Data Transferring in Background	Available to use other operation during data transfer, and retry automatically on unstable network condition.
	Simple Sending / Receiving	Sending /Receiving data without ActiveX Plug-in. (Some functions not useable)
	One Time Sending	Available sending to unregistered user.
	Report-To	Send a message with notification(arrived and downloaded) e-mail to specified address.
	Cancel Sent Message	Cancel sent messages and attached files.
	Address Book	Saving user e-mail address that can use for sending.
	Data Encryption	Confidential data can be saved in encrypted.
	Draft Saving / Editing	Saving drafted message and use it on data transfer.
	Configuring Notification	Configuring (ON or OFF) Notification e-mail on situations(Arrived, Downloaded etc).
	Setting expiry date for sending message	Available keeping days when sending message. Default 30 days or less (Default 15 days or less for One Time Sending)
	Additional password on Attachment Files	Setting a special password for download operation. (Password is noticed automatically by e-mail)
Administration	Log viewer	Check and download log of user's message operations for managers and approvers.
	Data usage amount viewer	Viewing the monthly data usage amount of each contract.
	Registration Information	Check and download application form of registration information.
Options	High-speed	Providing multiplexing connection that's increase connection speed. Good for data transferring with overseas.
	Additional data usage amount	Adding data usage amount (Required to use over 100GB/month)
	Application interface (API)	Provides a programmatic interface to perform automatic data transfer controlled from other systems.
	IP address control	Configuring users who can only use D.e-Express from specific IP address.
	Monitoring usage / alert	Providing sending data transfer or approval log of last month for each company.

1) Connecting Network

D.e-Express is able to be used with Internet.

2) OS/Browser

The environment^(*1) ^(*2) ^(*3) where the Service operations were confirmed is as follows.

OS	Browser
Windows 10 (Only 64-Bit Edition) Windows 11	Google Chrome (64-Bit Edition)
	Microsoft Edge (64-Bit Edition) * Only the Chromium-based Microsoft Edge is usable.

Note: The environment above is subject to change in relation to the version upgrade of the Service, the support conditions of the OS / browser manufactures, etc.

(*1) : In some case, the Service cannot be used in your environment.

(*2) : In order to use all the functions of the Service, it is necessary to use the D.e-Express plug-in installed.

(*3) : In case that it is difficult to install the plug-in due to conveniences of the PC environment or the like, you can send / receive data by using the Simple Sending/Receiving function.

Appendix3.Service time and Data Guarantee

Items		Contents
Service time		<p>From 6:00 on Monday to 24:00 on Saturday (JST)</p> <p>*Note that service may stop within the time above in circumstances such as emergency maintenance.</p>
Data Guarantee		This service does not guarantee your data. For important files please store and manage the data on your side.
Contacts	Support Time	24H365D
	Language	English (by e-Mail) , Japanese(by Portal site or telephone)

- 1) D.e-Express servers are located in Japan and all transfer data is stored in those servers.**
- 2) Our customers have to comply with all regulations both of domestic and international including regulation for transfer personal data to the third country.**

Example: EU legal framework of data protection

-> Model Contracts for the transfer of personal data to third countries

(http://ec.europa.eu/justice/data-protection/document/international-transfers/transfer/index_en.htm)

Our company shall not be liable for damages caused by customers' violation of regulations.

END